
SOUTHAMPTON GUILDHALL

A **LIVE NATION** VENUE



the city's premier multi-purpose venue

venue hire brochure



1. Welcome to Southampton Guildhall

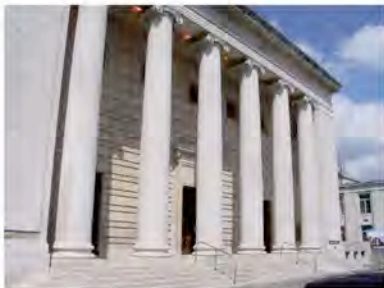


Introducing Southampton Guildhall

Proposals to build a 'Town Hall' existed in 1878 and were brought to fruition with a brand new state-of-the-art Guildhall in 1937. Built in the classical style of the 1930's it is today part of a Grade 2* listed building.



Incorporated into the building is the John Compton Dual Console Pipe Organ, which is still played at civic ceremonies and concerts throughout the year.



The Guildhall is owned by Southampton City Council. However, in 2003, the management of the venue was handed to Live Nation, Europe's largest provider of entertainment. The partnership has proved to be very successful.



Southampton Guildhall is currently the city's largest multi-purpose venue, with two additional smaller venues also available. Whether you are organising a major conference, exhibition, banquet, dinner dance, show or concert, the Guildhall, together with its skilled and experienced events team, is the ideal solution. The versatility of the venue enables us to tailor seating plans, table lay-ups, décor, sound, lighting and catering to suit your requirements.

Over the years Southampton Guildhall has played host to a vast array of large prestigious events including live television and radio broadcasts, meetings, wedding receptions and some of the world's top rock and pop bands.

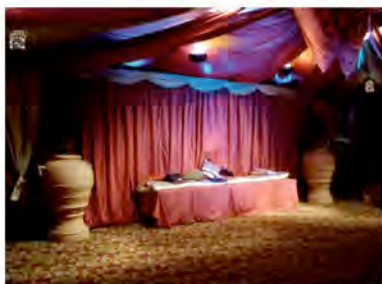
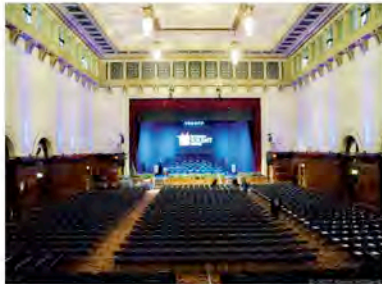
Location



The Guildhall is ideally located in the centre of Southampton, under the city's landmark clock tower, enabling excellent access by air, bus, car, rail and ferry. Car parking is only a short walk from our front doors.

There are also a large number of hotels within walking distance of the venue, providing a wide range of accommodation to suit most budgets.

2. Southampton Guildhall



Overview / Suitability

Entry to the main hall is via the pillared entrance, which leads you into the foyer. From here you can access the cloakrooms, toilets, balcony and Solent Suite. Moving forwards takes you to our reception area, which is an ideal location for drinks receptions, as a registration or information point, or as an additional bar or retail area. Next you come to the main hall, which has a full size Canadian Maple dance floor. This can be left covered or uncovered in various configurations to suit your needs. Either side of the hall are the bar areas, which offer a comfortable and spacious environment for your guests. At the top end of the room is the stage, upon which many world class artistes have performed.

With its flexible seating system, and spacious feel, the hall is a truly multi-purpose area, suitable for almost all types of events. The stage is large enough to accommodate everything from a full size band to a large scale conference.

Capacity

Our capacity is dependant upon your specific requirements. Seating plans, lay-ups and table plans can be tailored to your needs, for example:

- ▶ Full theatre style, up to 1271 seated
- ▶ Full standing for rock & pop concerts, up to 1749
- ▶ Dinners, banquets and wedding receptions up to 630
- ▶ Student balls up to 1200 standing
- ▶ Exhibitions up to 60 stands

Our theatre seating is modular, so can therefore be arranged in a variety of lay-ups, suitable for:

- ▶ Meetings, lectures and conferences
 - ▶ Sporting events such as boxing, snooker & wrestling
 - ▶ Fashion shows with a range of catwalk options
 - ▶ 'In the round' theatrical performances
-

3. Southampton Guildhall



Basic Dimensions

Main Auditorium

- ▶ 21.5m wide
- ▶ 34.6m long
- ▶ 14.7m high

Main Stage

- ▶ 14.8m wide
- ▶ 7.9m deep
- ▶ 8m high



Basic Facilities

- ▶ Fully carpeted auditorium, or part/ all of the dance floor can be uncovered
- ▶ Flat floor, tiered or loose seating
- ▶ Fixed balcony seating
- ▶ Trestle and round tables
- ▶ Variety of portable staging and stage extensions
- ▶ Compton Dual-Console Pipe Organ
- ▶ Retractable tiered platform on stage suitable for large choral and orchestral events
- ▶ Stair units to stage
- ▶ 'Black box' stage floor and drapes
- ▶ Dressing rooms
- ▶ Fully licensed bars
- ▶ Reception Area
- ▶ Cloakrooms



Disabled Facilities

- ▶ Level access via a purpose built ramp to the right hand side of the main entrance
- ▶ Toilet facilities are located on the ground floor
- ▶ Two parking spaces - subject to availability
- ▶ Guide dogs are welcome
- ▶ An infra red system covering the whole auditorium is in place for the hard of hearing



4. The Solent Suite



Overview / Suitability

The Solent Suite can either be accessed from the Guildhall's main foyer, making it an ideal overflow venue or 'second room', or via its own separate entrance to allow for independent usage.



The venue is another multi-purpose space with no fixed furniture, which makes it ideal for holding events such as wedding receptions, birthday and anniversary parties, exhibitions or small scale music and comedy nights.

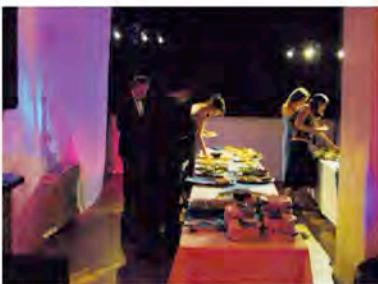


Capacity

- ▶ Up to 200 people for parties
- ▶ 150 for music or comedy
- ▶ 160 for a dinner (without a dance floor)
- ▶ 130 for a dinner dance (with a dance floor)

Basic Dimensions

- ▶ 9m wide
- ▶ 32m long
- ▶ 3.6m high (at either end)
- ▶ 3.1m main area



Basic Facilities

- ▶ Flat floor or loose seating
- ▶ Trestle and round tables
- ▶ Portable staging
- ▶ Fully licensed bar
- ▶ Cloakroom



Disabled Facilities

- ▶ Access to the venue is gained via a ramp to the side of the Guildhall. There is also a small platform lift for customers unable to use the stairs
 - ▶ Toilet facilities are located on the ground floor
 - ▶ Guide dogs are welcome
-

5. The Lecture Theatre



Overview / Suitability

The Lecture Theatre is located in the north side of the Civic Centre. It is accessible from the Guildhall, or independently via the main North Guild entrance.

The venue has fixed raked theatre seating with fold away writing ledges and up to two removable rows on the flat floor. The venue is ideally suited for meetings, smaller presentations and conferences, as well as literary talks.



Capacity

Up to 118 seats in the auditorium.



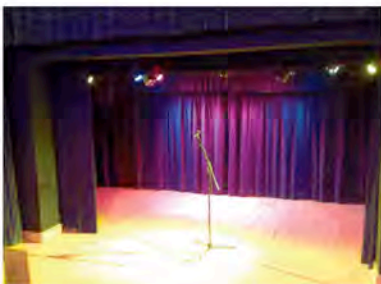
Basic Dimensions

Main Stage

- ▶ 4.3m wide
- ▶ 4.2m deep
- ▶ 2.8m high

Basic Facilities

- ▶ Fixed stage
- ▶ Lectern
- ▶ Front projection screen
- ▶ A cloakroom can be made available

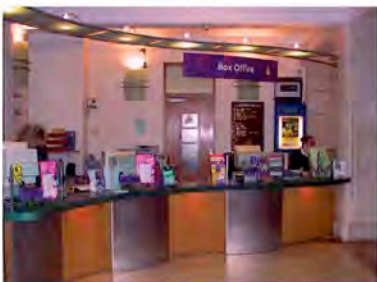
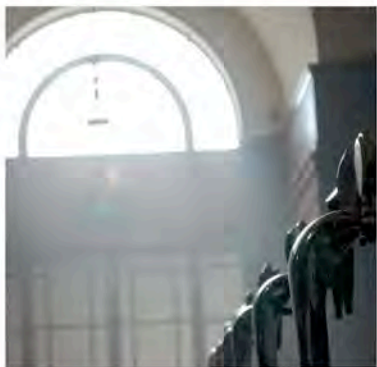


Disabled Facilities

- ▶ Up to two rows of seats can be removed in front of the stage for wheelchairs
- ▶ Level access via the main North Guild entrance
- ▶ Toilet facilities are located on the ground floor
- ▶ Guide dogs are welcome
- ▶ An induction loop system covering the whole auditorium is in place for the hard of hearing



6. Other Services



Additional event services we can assist you with

Operational

- ▶ Event safety personnel
- ▶ Crowd control and stage barriers
- ▶ First Aid cover
- ▶ Stewards
- ▶ Seating/ table plans and lay-ups
- ▶ Flower arrangements
- ▶ Balloons

Catering & Bars

- ▶ A complete catering service is offered by Wise Catering, who can supply a variety of menus (from light buffets to full banquets) depending on your requirements.
- ▶ Fully licensed credit or pay bar facilities (except in the Lecture Theatre).

Technical

- ▶ Full production lighting design and equipment
- ▶ Full production sound design and equipment
- ▶ Standard and full custom drapes, props and event themeing
- ▶ Video and data projection systems
- ▶ Pyrotechnics
- ▶ Searchlights, exterior projection and architectural illumination
- ▶ Local crew, riggers, lighting and sound designers / engineers

Box Office

- ▶ Full computerised and bar-coded ticket sale service, with transactions in person, over the telephone or via the internet.

Marketing

- ▶ Cost effective marketing service to help promote your events' specific needs.

Please contact us for more information on any of the above, or any other service not listed.

7. How To Find Us



We Are Here:



Road

The Guildhall is in Southampton's City Centre, easily accessible from the local motorway network.

Rail

Southampton Central station is a short walk from the Guildhall.

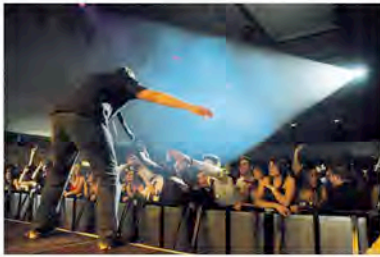
Air

Southampton International airport is on the outskirts of the city, either a short drive or train journey from the Guildhall.

Sea

The Guildhall is close to local ferries serving Hythe and the Isle of Wight.

8. Previous Clients & Shows



You'll be in good company...

Bands

Alice Cooper, Amy Winehouse, Arctic Monkeys, Beverley Knight, Bloc Party, Craig David, Delays, Doves, Editors, Electric Six, Embrace, Erasure, Faithless, Feeder, Foo Fighters, Gary Numan, Goldfrapp, Groove Armada, Hard-Fi, Jamiroquai, Kasabian, Keane, Kosheen, KT Tunstall, Kulashaker, Levellers, Manic Street Preachers, Massive Attack, Maximo Park, Melanie C, Moby, Motorhead, Natalie Imbruglia, Oasis, Ocean Colour Scene, Paul Weller, Peter Gabriel, Primal Scream, Radiohead, Skunk Anansie, Snow Patrol, Stereophonics, Suede, Sugababes, Super Fury Animals, Supergrass, The Charlatans, The Fratellis, The Killers, The Kooks, The Streets, Whitesnake, Zero 7, Zutons

Comedy Shows

Ardal O'Hanlon, Ed Byrne, Harry Hill, Jack Dee, Jenny Eclair, Jo Brand, Lee Evans, Lenny Henry, Mighty Boosh, Mitchell and Webb, Omid Djalili, The League Of Gentlemen

Private Clients

BBC, British Gas, Carnival, Gcap Media, IBM, John Lewis, NATS, Norwich Union, Ocular Sciences, P&O, PwC, Skandia, Tesco, Thomas Cook, Tyco

Colleges / Universities

Brockenhurst College, Barton Peveril College, MEDSOC, Peter Symonds College, Solent University, Southampton University, Warsash Maritime Academy

...to name but a few!

**SOUTHAMPTON
GUILDHALL**
a **LIVE NATION** venue

Southampton Guildhall | West Marlands Road | Civic Centre
Southampton | SO14 7LP | UK
t: +44 (0)23 8083 2453 | f: +44 (0)8707 492 354
www.southampton-guildhall.com

Printed on recycled paper

